

Farmacologicamente discutendo

Romano Danesi
Dipartimento di Oncologia ed Emato-Oncologia
Università degli Studi di Milano



REVOLUTIONARY ROAD IN CLL

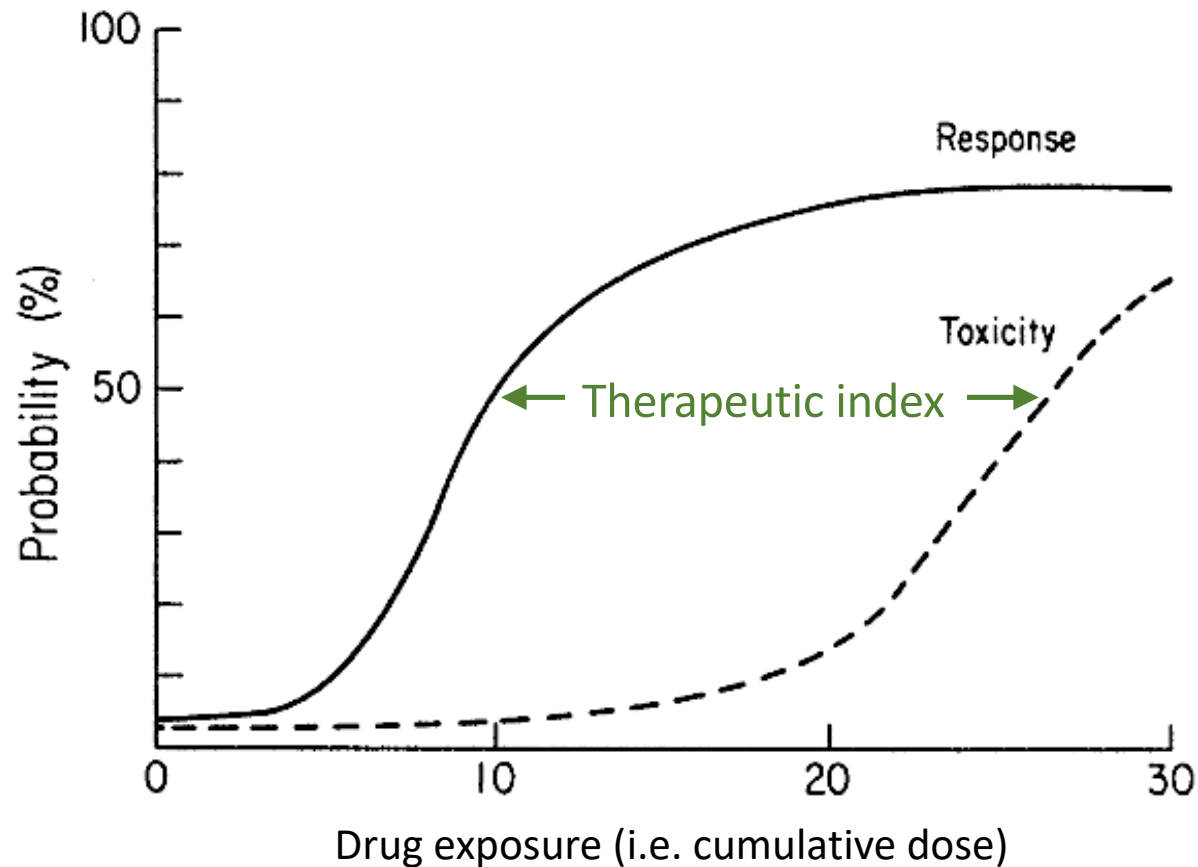
Innovazione rivoluzionaria nella terapia
della leucemia linfatica cronica

Catania, 28 maggio 2024
Palace Catania UNA Esperienze

Disclosures

Company name	Research support	Employee	Consultant	Stockholder	Speakers bureau	Advisory board	Other
MSD			X		X		
Eisai			X		X	X	
AstraZeneca	X		X		X	X	
BeiGene					X		
Janssen	X		X		X		
Novartis			X		X		
Lilly			X		X		
Incyte			X		X		
AB Science			X				
Sanofi			X		X	X	
Abbvie			X		X		

Relationship between drug exposure and effects (therapeutic and adverse)

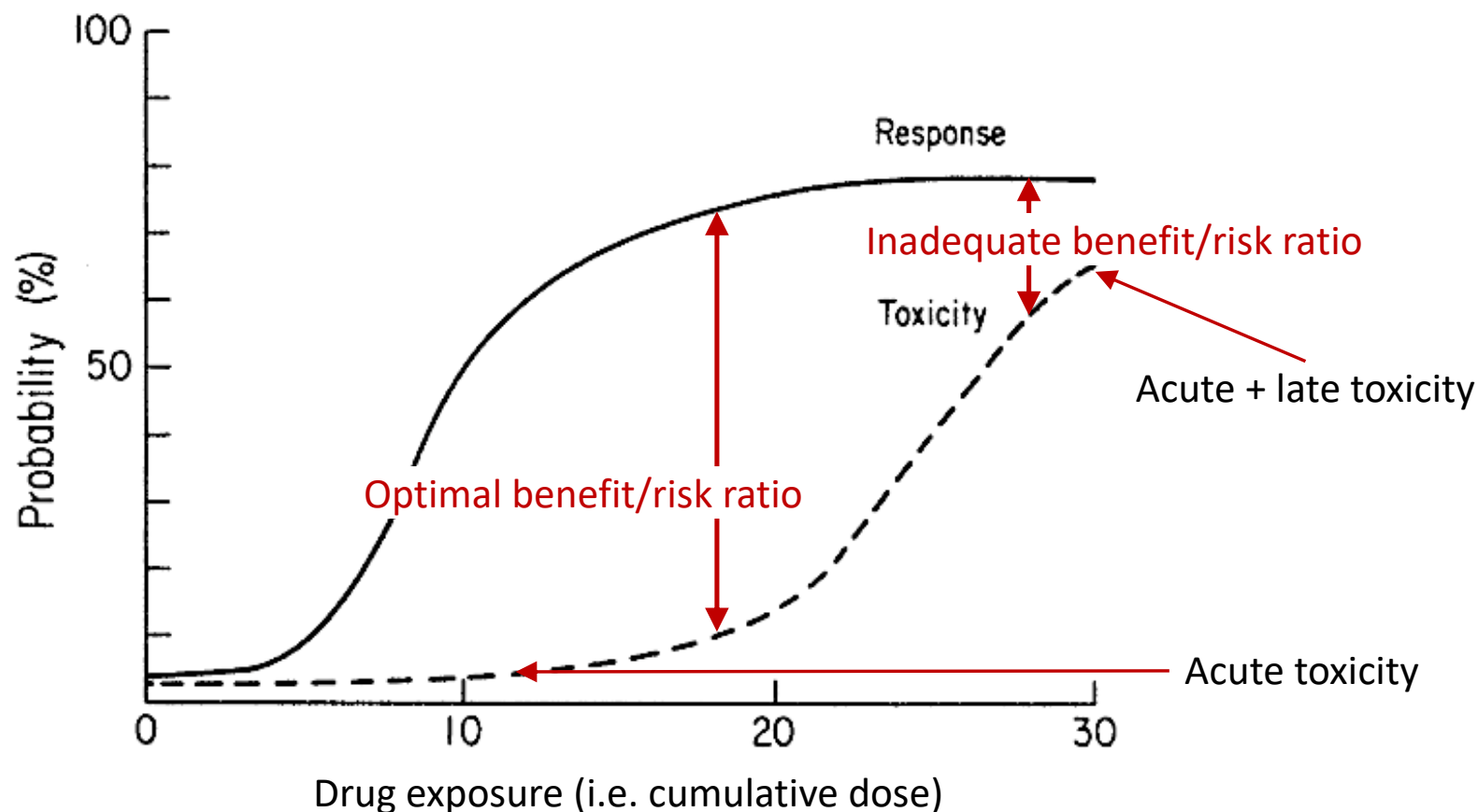


Applied Pharmacokinetics, 3rd ed. Vancouver, WA: Applied Therapeutics; 1992. pp.1-3

REVOLUTIONARY ROAD IN CLL
Innovazione rivoluzionaria nella terapia della leucemia linfatica cronica


Catania, 28 maggio 2024
Palace Catania UNA Esperienze 3

Relationship between drug exposure and effects (therapeutic and adverse)



Applied Pharmacokinetics, 3rd ed. Vancouver, WA: Applied Therapeutics; 1992. pp.1-3

REVOLUTIONARY ROAD IN CLL
Innovazione rivoluzionaria nella terapia della leucemia linfatica cronica

Catania, 28 maggio 2024
Palace Catania UNA Esperienze 4

The rationale of venetoclax-ibrutinib combination

- Ibrutinib and venetoclax have distinct and complementary modes of action that work synergistically to eliminate distinct CLL cell populations.
- CLL cells rely on the overexpression of antiapoptotic proteins (BCL-2, BCL extralarge [XL], and myeloid cell leukemia-1 [MCL-1]) for survival.
- Ibrutinib decreases BCL-XL and MCL-1, but not BCL-2, in highly proliferative lymph node emigrant B cells (CD5hi CXCR4dim), mobilizes CLL cells from lymph nodes and lymphoid niches into the peripheral blood, and enhances their susceptibility to venetoclax-induced apoptosis.

Moreno C et al. Blood Advances 2023; 7:5294-5303

REVOLUTIONARY ROAD IN CLL

Innovazione rivoluzionaria nella terapia della leucemia linfatica cronica



Catania, 28 maggio 2024
Palace Catania UNA Esperienze

The rationale of venetoclax-ibrutinib combination

- Combined venetoclax plus ibrutinib demonstrated synergistic antitumor activity in preclinical CLL models, with greater cytotoxicity observed with the combination than with either agent alone.
- Additionally, recent clinical studies with venetoclax plus ibrutinib demonstrated high undetectable minimal residual disease rates in both peripheral blood and bone marrow in patients with CLL.

Tam CS et al. <https://doi.org/10.1182/blood.2021014488>

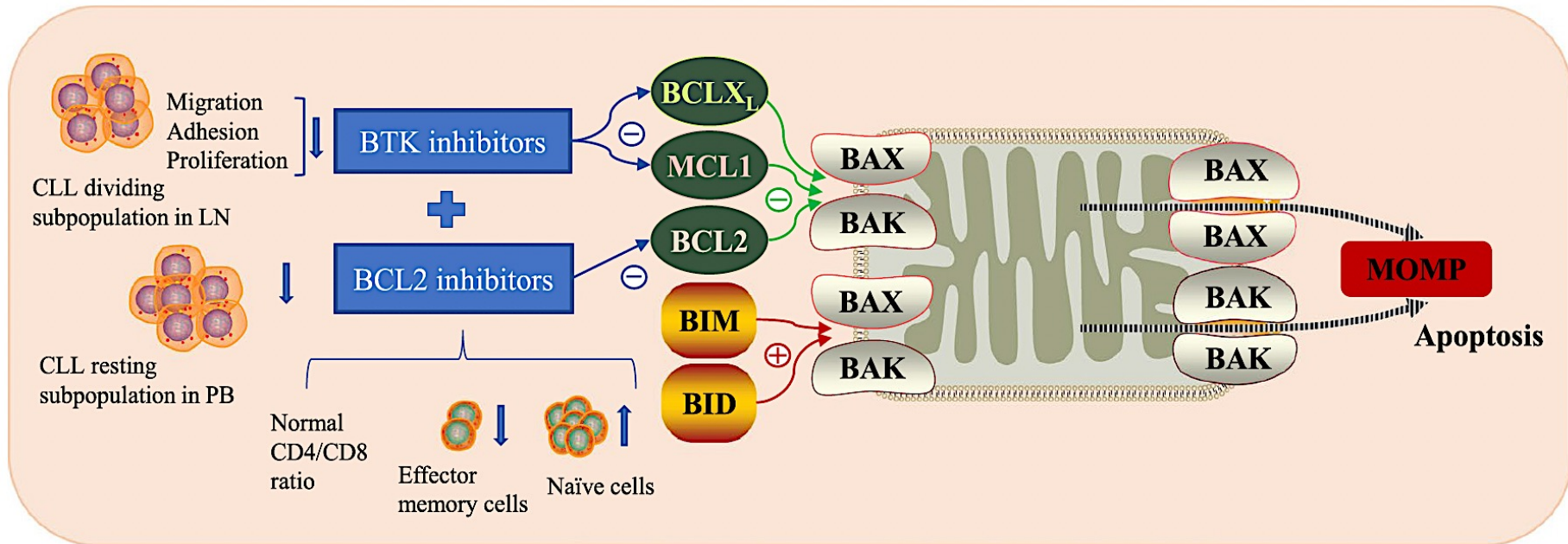
REVOLUTIONARY ROAD IN CLL

Innovazione rivoluzionaria nella terapia della leucemia linfatica cronica



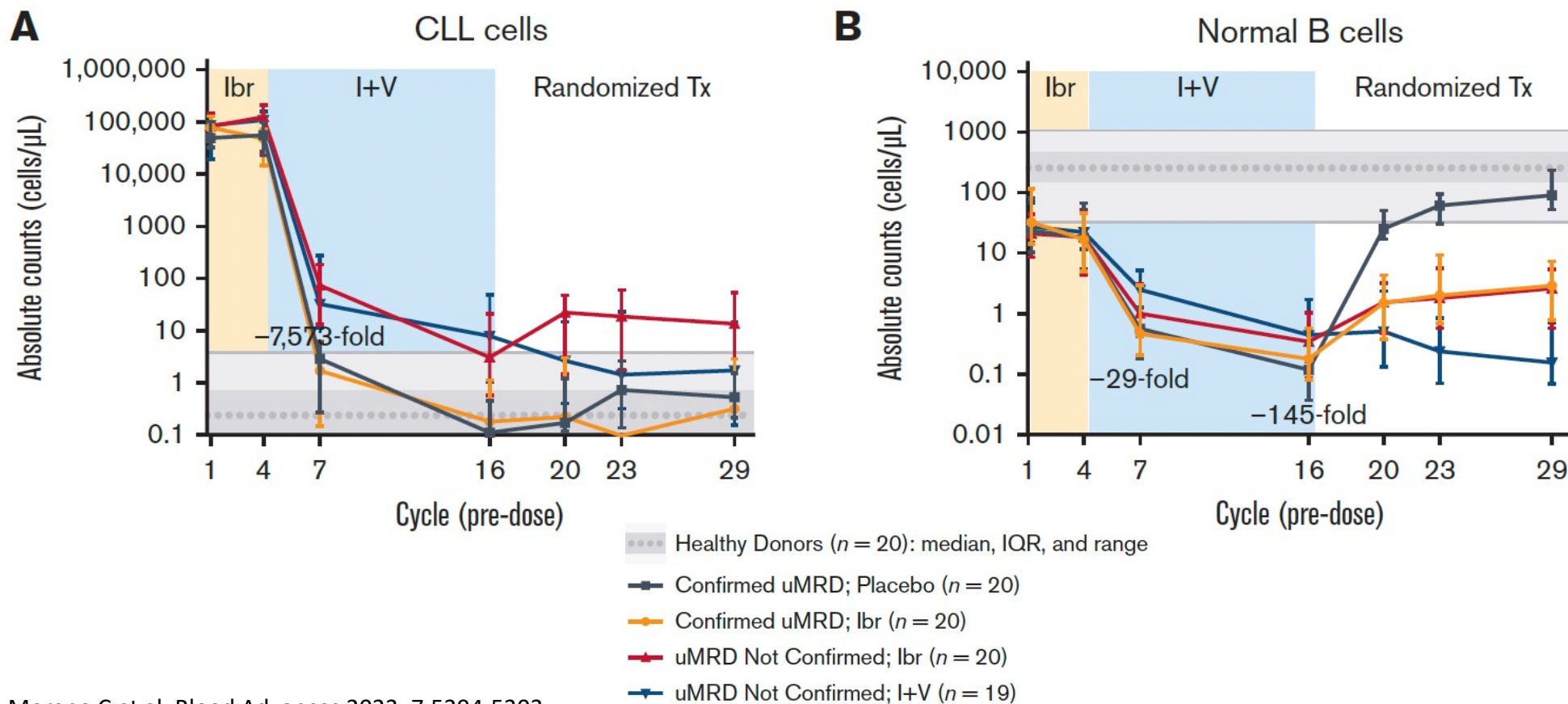
Catania, 28 maggio 2024
Palace Catania UNA Esperienze

The distinct and complementary mechanisms of ibrutinib and venetoclax



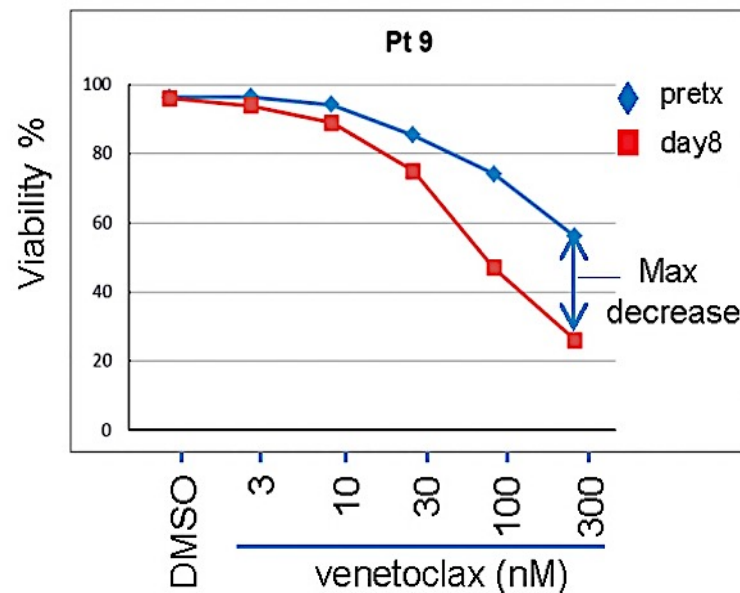
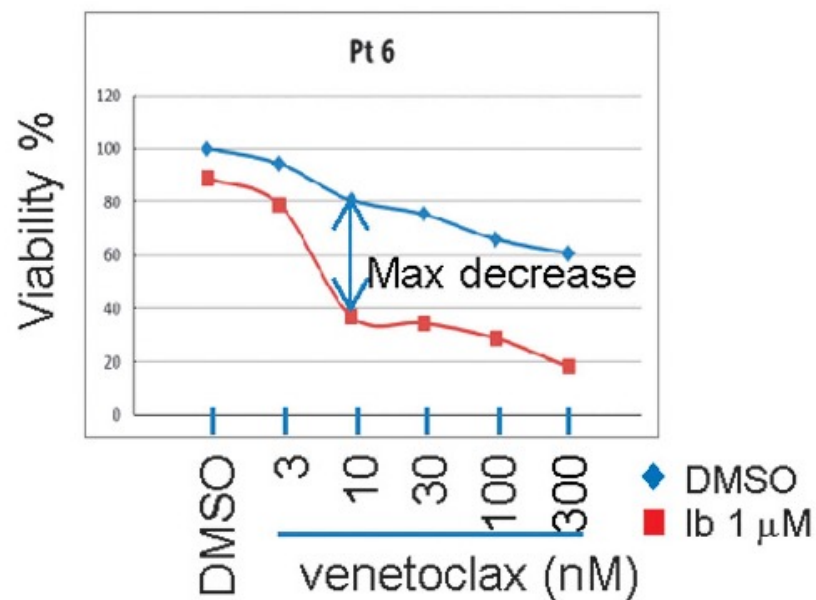
Zhang et al. Biomarker Research (2022) 10:17

Ibrutinib plus venetoclax rapidly eradicates CLL cells (data from CAPTIVATE)



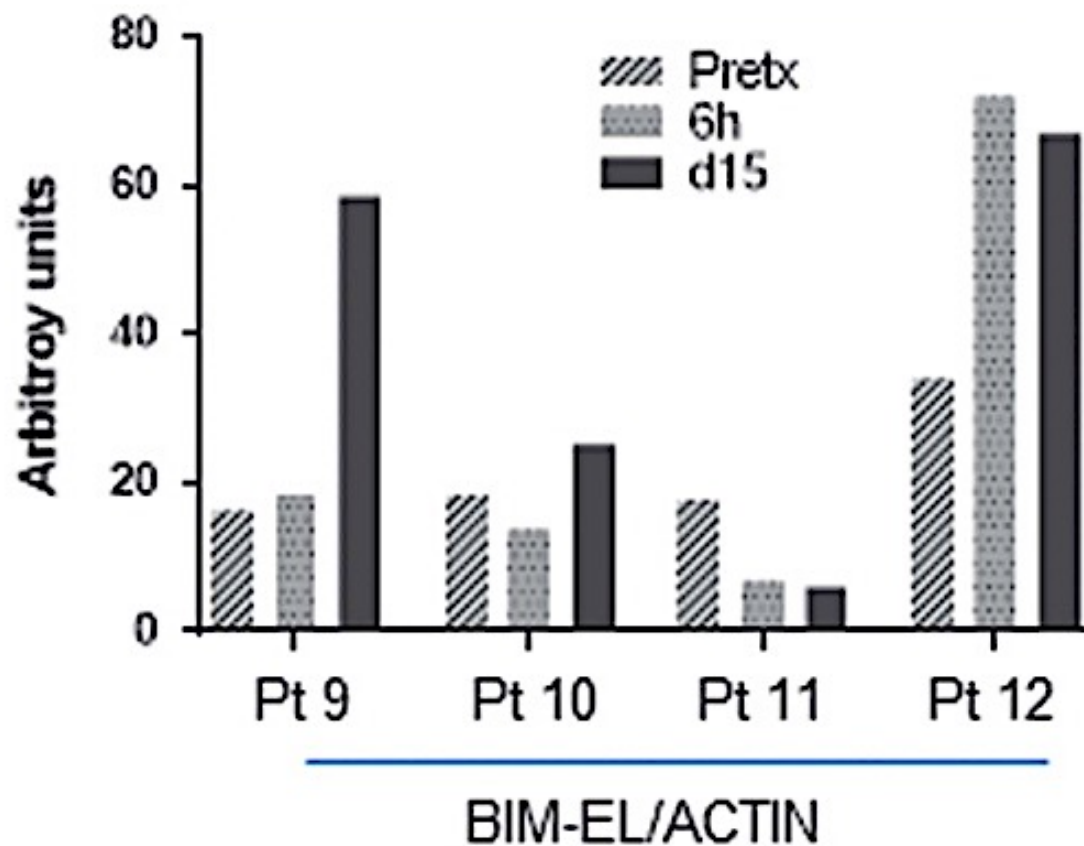
Moreno C et al. Blood Advances 2023; 7:5294-5303

Pre-treatment with ibrutinib increases CLL cell sensitivity to venetoclax



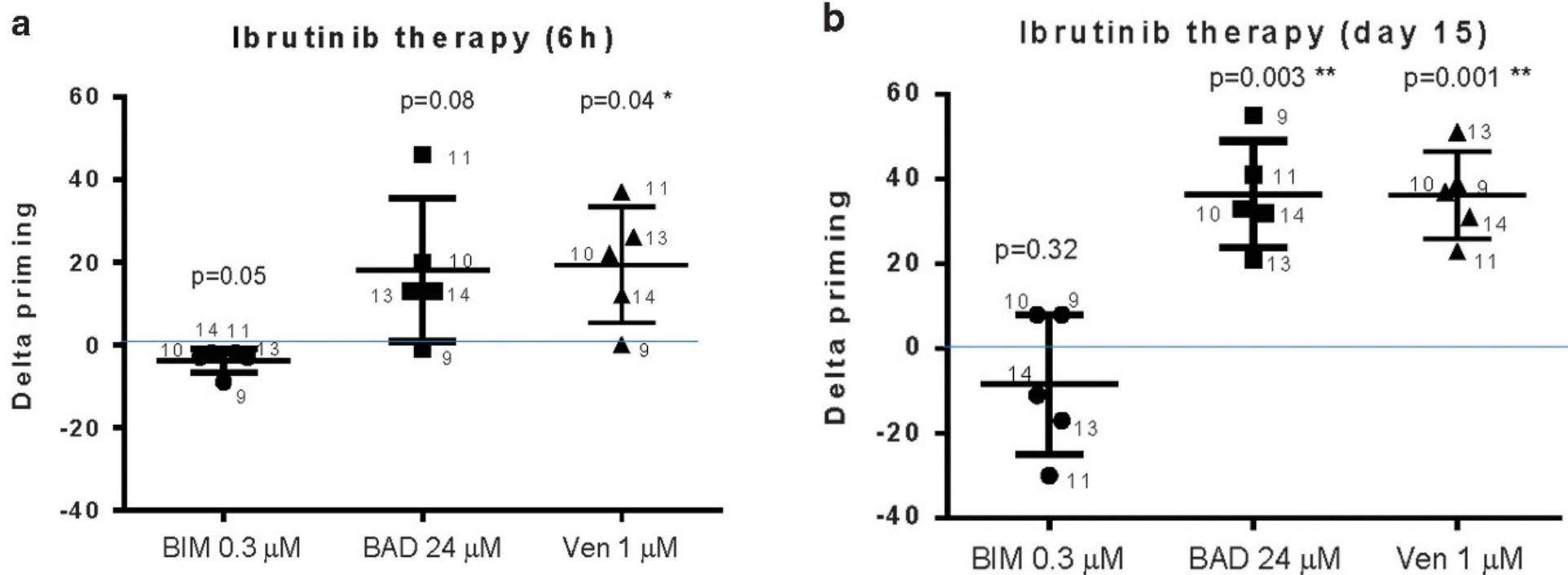
Deng J et al. Leukemia (2017) 31, 2075–2084

BIM expression is increased in CLL cells treated in vivo with BTK inhibition



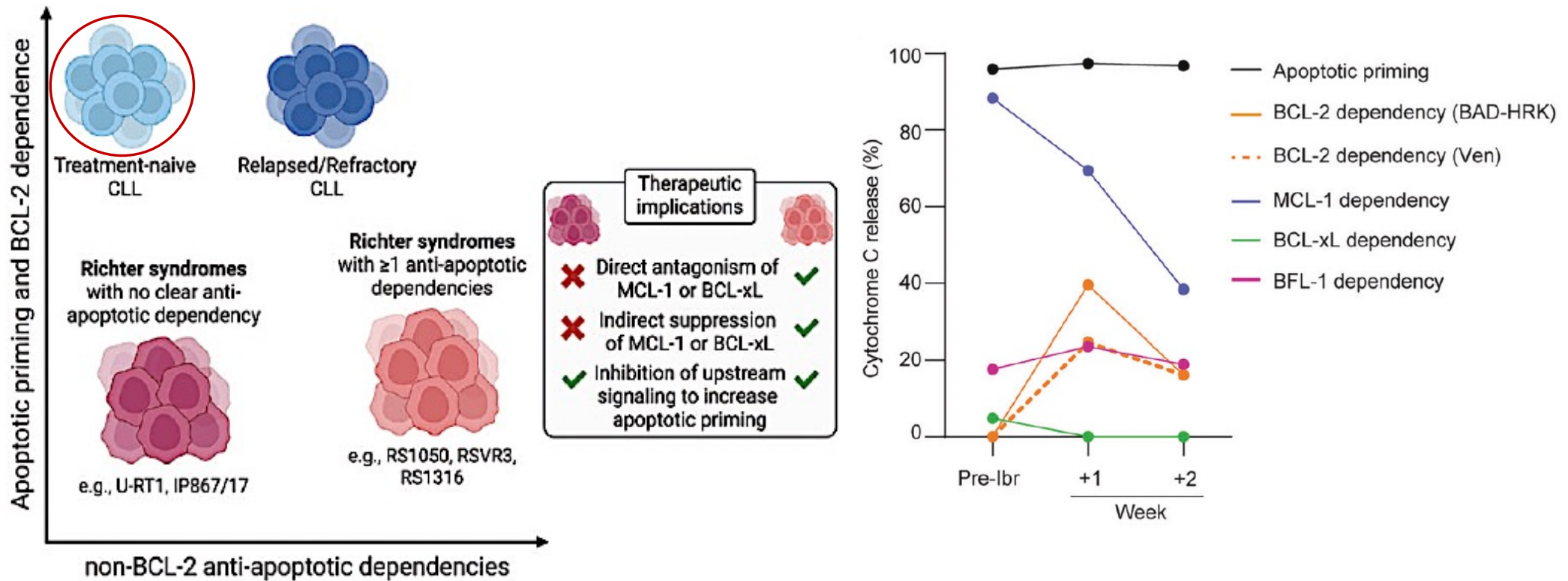
Deng J et al. Leukemia (2017) 31, 2075–2084

In vivo BTK inhibition increases BCL-2 dependence in cells from CLL patients



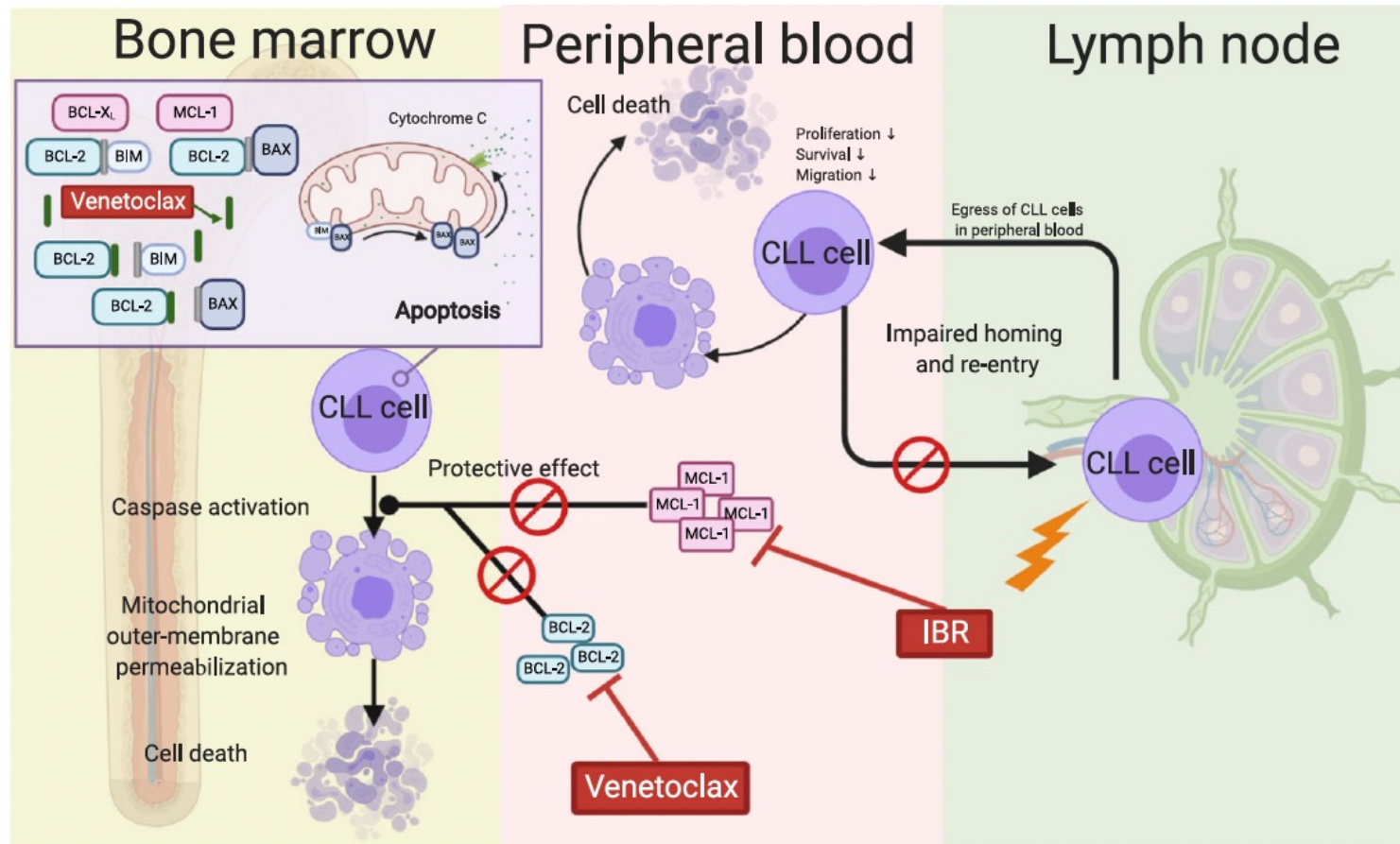
Deng J et al. Leukemia (2017) 31, 2075–2084

Treatment-naive CLL cells are characterized by both high BCL-2 dependency and apoptotic priming



Rigo A et al. Cell Death and Disease (2024) 15:323

Rationale for ibrutinib combination with targeted agent venetoclax



Conclusions

- The complementary effects of venetoclax and ibrutinib on CLL mitochondria strongly supports their exploration of these combinations in the clinic.
- The combination of venetoclax and ibrutinib is highly active and well-tolerated and provide fixed-duration options for patients with CLL.

